

Photometric Report

MAC Ultra Wash – Medium

MARTIN PROFESSIONAL R&D OPTICAL LABORATORY

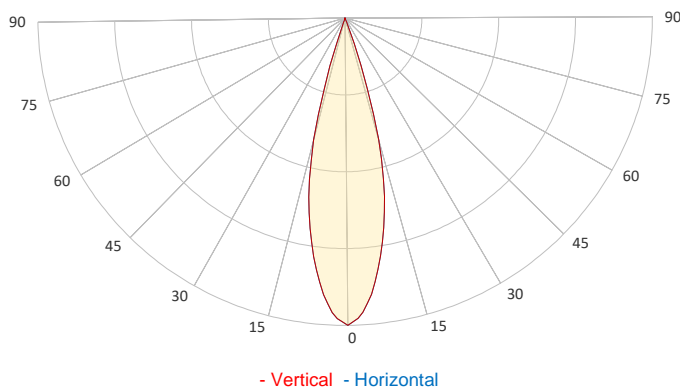
GENERAL SPECIFICATIONS

Total Fixture Output:	63500 lm
Light Engine Output:	90000 lm
Efficacy:	44 lm/W
Lens Option:	N/A
Beam Angle (50%):	6,8-47,5°
Field Angle (10%):	9,1-62,0°
Cut-off Angle (3%):	10,0-65,8°
CRI:	66 (+/-3)
CQS:	66
TM-30 Rf:	66
TM-30 Rg:	95
TLCI:	40
Color Temperature:	6000 K (+/-250 K)



SAMPLE MEASUREMENT

POLAR PLOT

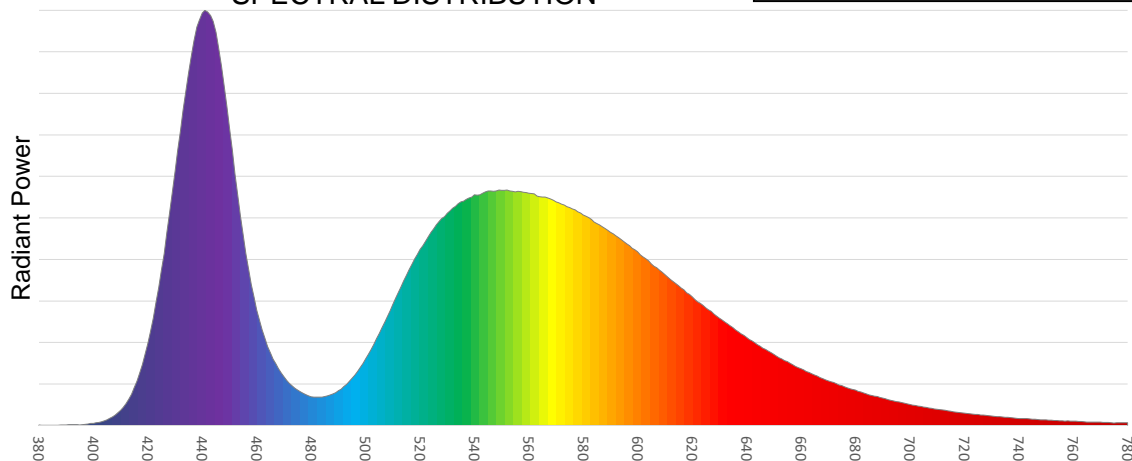


Catalog Number:	90250055HU
Measured Output:	65668 lm
Measured Peak:	367328 cd
Consumed Power:	1334 W
Efficacy:	49.2 lm/W

Beam Angle (50%):	27.2°
Field Angle (10%):	37.7°
Cut-off Angle (3%):	39.7°

Measurement Condition:	
Ambient Temperature:	25° +/- 5° C
AC Supply:	230V/50Hz
Fan Mode:	Constant Full Fan
Fixture Warm-up Time:	30 minutes

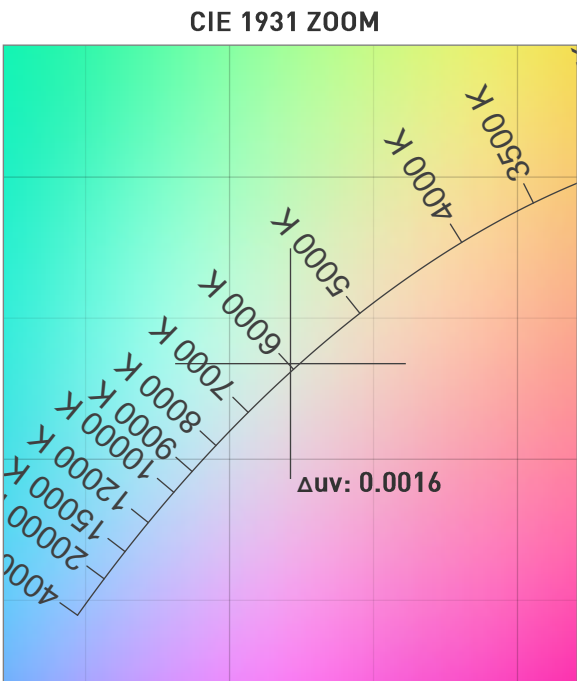
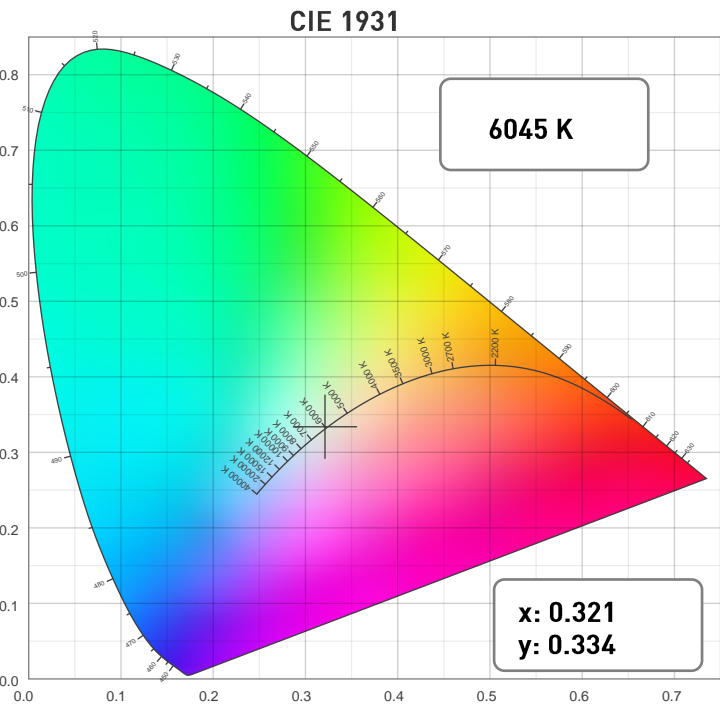
SPECTRAL DISTRIBUTION



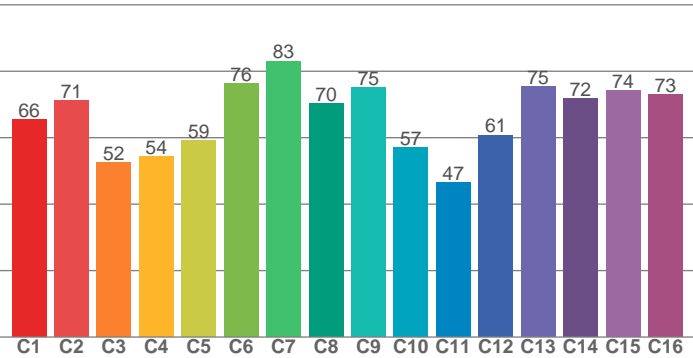
Photometric Report

MAC Ultra Wash – Medium

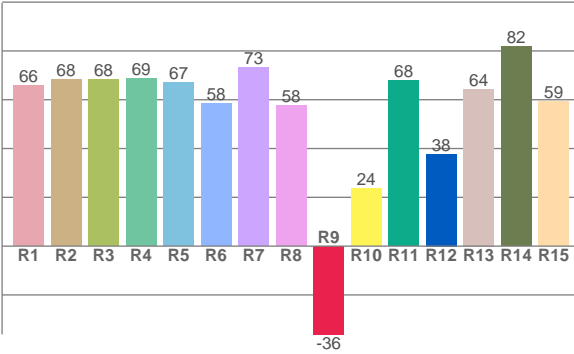
CHROMATICITY



TM30: 65.6



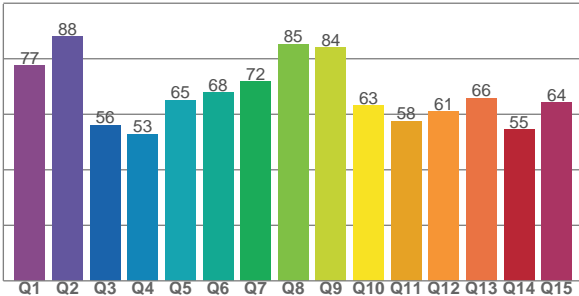
CRI: 65.9 (R1-R8)



COLOR PARAMETERS

Color Temperature	Color Rendering Index	Red Component	Color Fidelity	Color Gamut
CCT	CRI	CRI R9	TM30 Rf	TM30 Rg
6045 K	65.9	-36.2	65.6	95.3

CQS: 65.8



Television Lighting Consistency Index	Color Quality Scale	Color Coordinate CIE 1931	Color Coordinate CIE 1931	Color Coordinate CIE 1964	Color Coordinate CIE 1964	Color Deviation from Black Body
TLCI	CQS	x	y	u	v	Δuv
40	65.8	0.321	0.334	0.202	0.315	0.0016

Photometric Report

MAC Ultra Wash – Medium

TM30

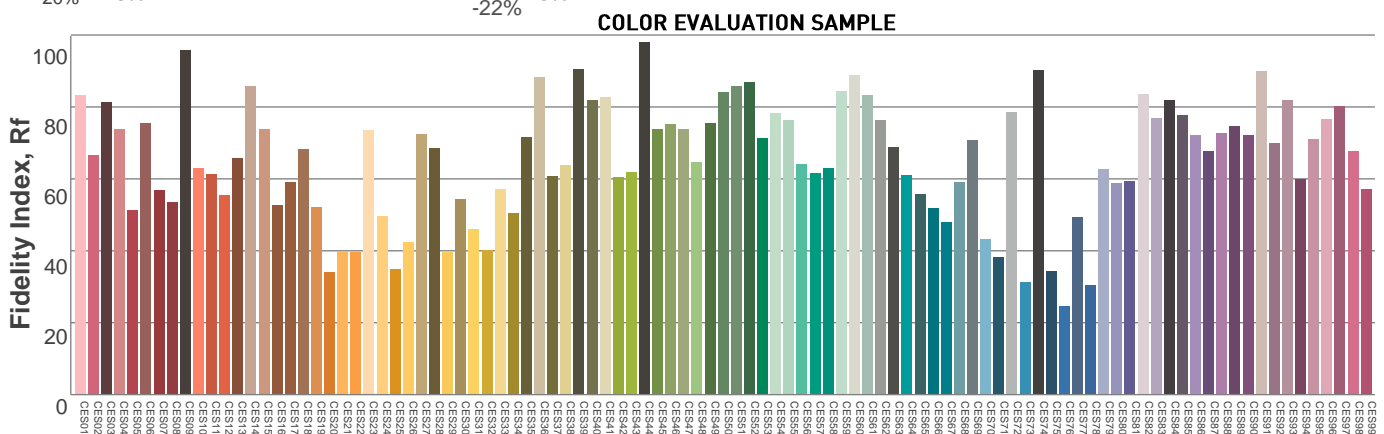
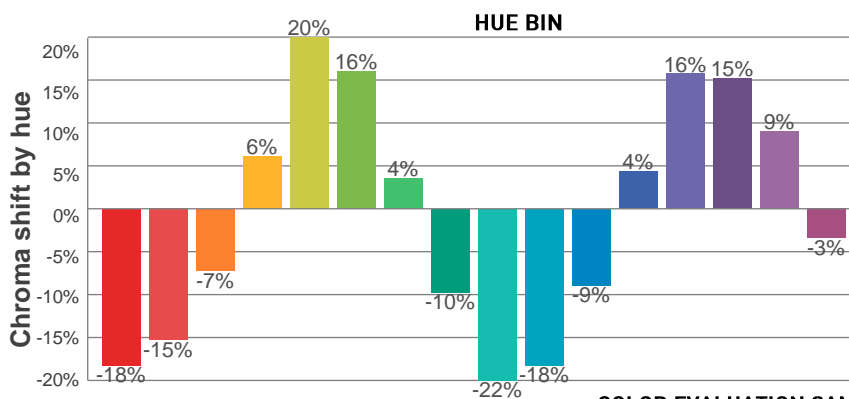
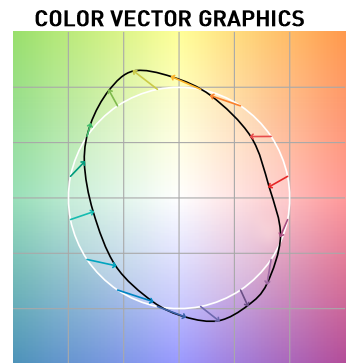
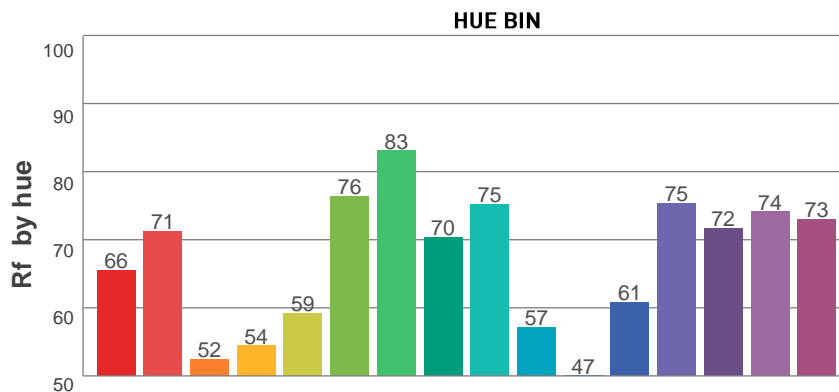
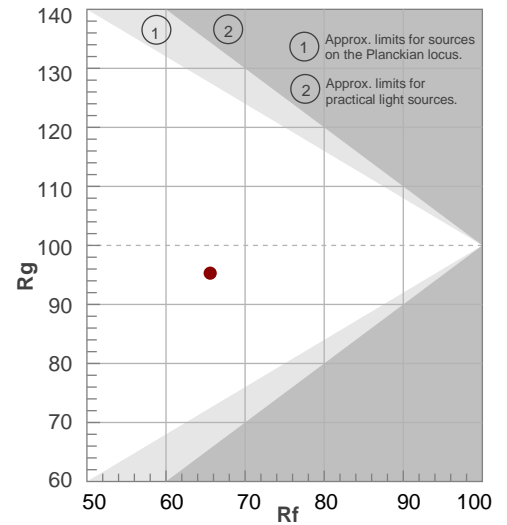
Rf 65.6

Fidelity index Rf

Rg 95.3

Gamut index Rg

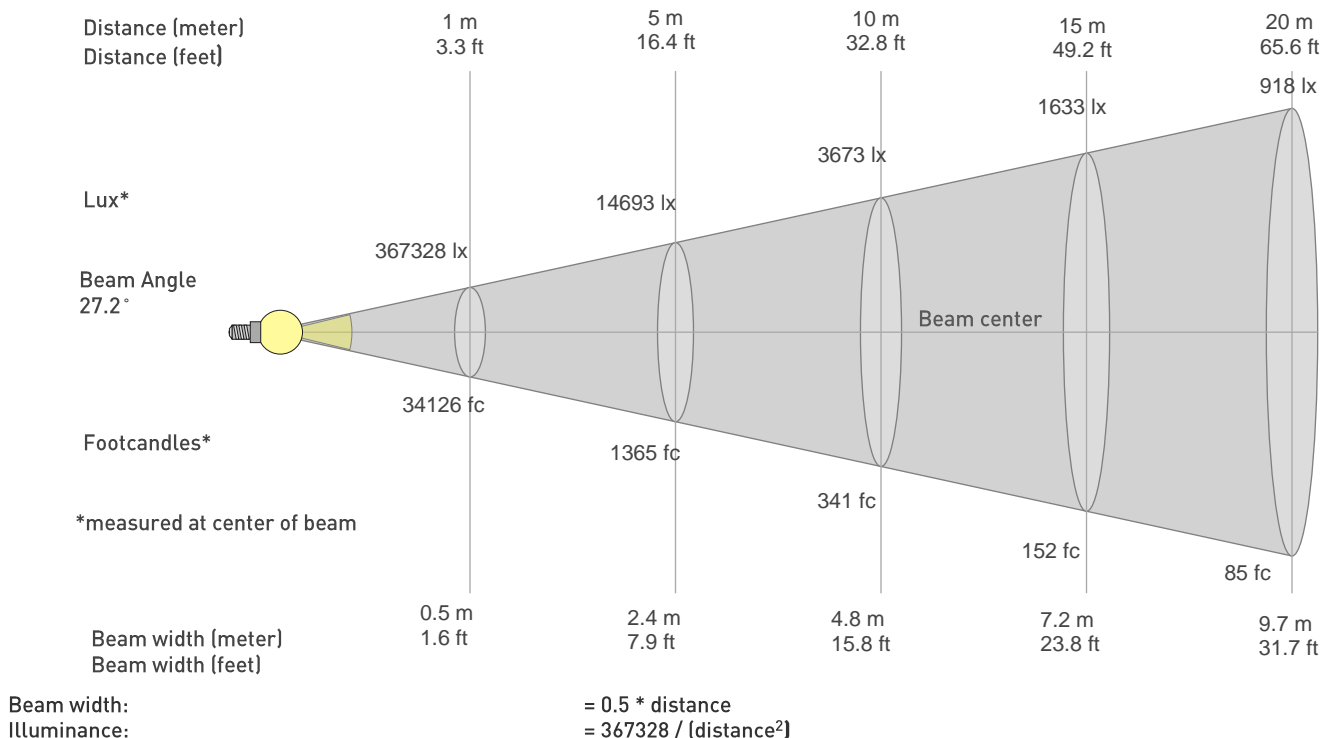
Hue Bin	R _f	Graphic shifts (%)	
		Chroma	Hue
1	66	-18%	-6%
2	71	-15%	10%
3	52	-7%	27%
4	54	6%	28%
5	59	20%	18%
6	76	16%	-1%
7	83	4%	-11%
8	70	-10%	-15%
9	75	-22%	-3%
10	57	-18%	19%
11	47	-9%	32%
12	61	4%	26%
13	75	16%	14%
14	72	15%	-2%
15	74	9%	-20%
16	73	-3%	-16%



Photometric Report

MAC Ultra Wash – Medium

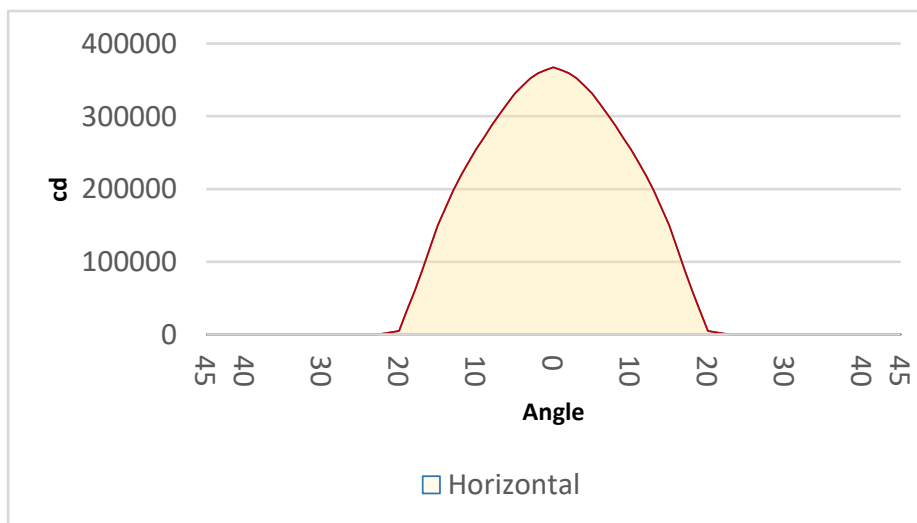
BEAM DETAILS



distance in [m] for illuminance in [lux] distance in [ft] for illuminance in [fc]

BEAM ILLUMINANCE FROM 1-20M

1m	2m	3m	4m	5m	6m	7m	8m	9m	10m	11m	12m	13m	14m	15m	16m	17m	18m	19m	20m
3.3ft	6.6ft	9.8ft	13.1ft	16.4ft	19.7ft	23ft	26.2ft	29.5ft	32.8ft	36.1ft	39.4ft	42.7ft	45.9ft	49.2ft	52.5ft	55.8ft	59.1ft	62.3ft	65.6ft
367328lx	91832lx	40814lx	22958lx	14693lx	10204lx	7496lx	5739lx	4535lx	3673lx	3036lx	2551lx	2174lx	1874lx	1633lx	1435lx	1271lx	1134lx	1018lx	918lx
34125.9fc	8531.5fc	3791.8fc	2132.9fc	1365fc	947.9fc	696.4fc	533.2fc	421.3fc	341.3fc	282fc	237fc	201.9fc	174.1fc	151.7fc	133.3fc	118.1fc	105.3fc	94.5fc	85.3fc



BEAM ANGLE 50%	FIELD ANGLE 10%	CUTOFF ANGLE 3%
27.2°	37.7°	39.7°